

## Models: DT810 / DT820

Pre-assembled and ready to operate. Just make an electrical connection.

Seamless Fiberglass Construction is immune to heat, cold, and bad weather.



Electric-powered – No fumes, fuel or diesel engine noise.

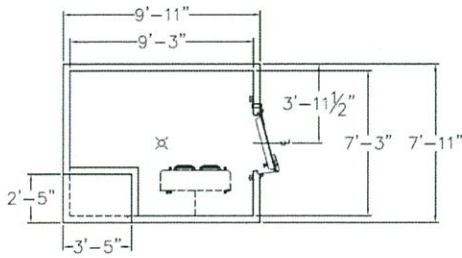
Can be placed anywhere – grass, gravel, or relatively uneven surfaces.

<b>Approvals:</b>	<ul style="list-style-type: none"> <li>▪ NSF listed</li> <li>▪ UL Class I foam</li> </ul>
<b>Insulation:</b>	<ul style="list-style-type: none"> <li>▪ Polyisocyanurate foam: 4" thick X 2.0 PCF nominal density</li> </ul>
<b>Fiberglass:</b>	<ul style="list-style-type: none"> <li>▪ 100 mil thick FRP composite – exterior</li> <li>▪ 80 mil thick FRP composite – interior</li> </ul>
<b>Exterior Finish:</b>	<ul style="list-style-type: none"> <li>▪ Seamless fiberglass</li> <li>▪ 2 part epoxy paint</li> </ul>
<b>Interior Finish:</b>	<ul style="list-style-type: none"> <li>▪ NSF approved flooring – non-skid floor finish – 29 grade sand aggregate</li> <li>▪ Rounded corners, sanitary</li> </ul>
	<ul style="list-style-type: none"> <li>▪ Heavy Duty non-skid floor</li> <li>▪ Lockable Door latch</li> <li>▪ Self-Closing Hinges</li> <li>▪ Hasp lock (ext. door)</li> <li>▪ Safety Release Handle</li> <li>▪ Heated Door Jamb</li> <li>▪ Magnetic gasket</li> <li>▪ Door Closer</li> <li>▪ Sweep Seal</li> <li>▪ Vinyl Strip Curtain</li> <li>▪ Galvanized Frame</li> </ul>
	<ul style="list-style-type: none"> <li>▪ Low ambient controls</li> <li>▪ Defrost timer</li> <li>▪ Heated relief port</li> <li>▪ Light switch/pilot light</li> <li>▪ Rain cap exterior doors</li> <li>▪ Remote dial thermometer</li> <li>▪ Interior lighting</li> <li>▪ Crowned roof</li> <li>▪ Heated freezer door</li> <li>▪ Stainless Steel Kick Plate</li> <li>▪ Forklift Capable frame</li> </ul>
<b>Specs:</b>	<ul style="list-style-type: none"> <li>▪ Flame spread index &lt; 25</li> <li>▪ Smoke developed index &lt; 185</li> <li>▪ Floor Strength: 900 lb/ft<sup>2</sup></li> <li>▪ Forklift Slots: 3" x 8" SQ TU, 37" apart on center</li> </ul>

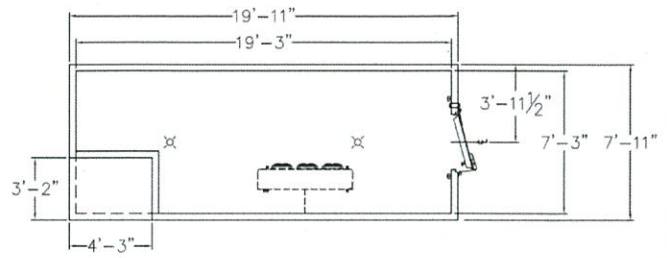


## Box Layout

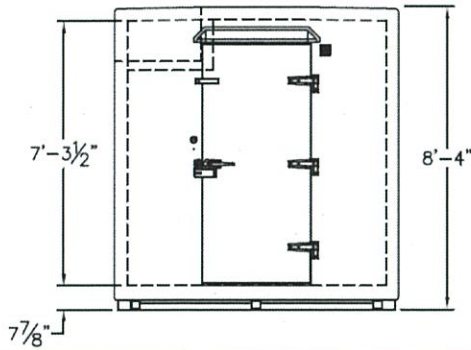
### DT810 Plan View



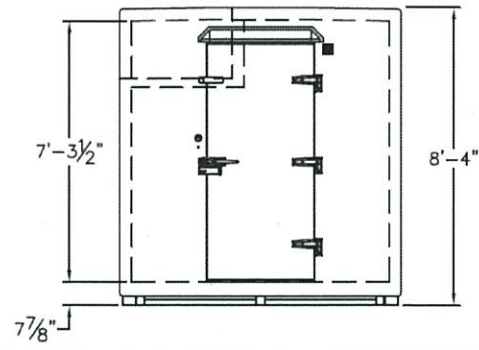
### DT820 Plan View



### DT810 Elevation View



### DT820 Elevation View



## Specifications

Model	DT810	DT820
Exterior Width	7'-11"	7'-11"
Exterior Length	9'-11"	19'-11"
Exterior Height	8'-4"	8'-4"
Interior Width	7'-3"	7'-3"
Interior Length	9'-3"	19'-3"
Interior Height	7'-3 1/2"	7'-3 1/2"
Interior Area	67 ft <sup>2</sup>	140 ft <sup>2</sup>
Interior Volume	489 ft <sup>3</sup>	1018 ft <sup>3</sup>
Incandescent Lights	1	2
Condensing Unit	FFAP-020Z-CFV	DJAF-024Z-CFV
Horsepower	2	2 1/4
Coil	AE26-92B	AE36-140B
Temperature	-10°F to 35°F	-10°F to 35°F
Refrigerant	R-404a	R-404a
Electrical Supply	208-230/110V	208-230/110V
Phase	1	1
Cycle	60 Hz	60 Hz
MCA	19.6 A	27.4 A
35°F Capacity	15,000 BTU/Hr @ 90°F	21,900 BTU/Hr @ 90°F
-10°F Capacity	6,060 BTU/Hr @ 90°F	8,810 BTU/Hr @ 90°F
Door Opening	33 1/4" x 78 1/2"	33 1/4" x 78 1/2"
Empty Weight	2000 lb.	4000 lb.