

2

SC 11-09 SERVICE CONTRACT - ESTIMATE WORKSHEET - ULTIMATE POWER INC. Yonkers Public Schools

School Building PS28 Boiler Numbers Date: 11/3/21

Satellite Vacuum Condensate

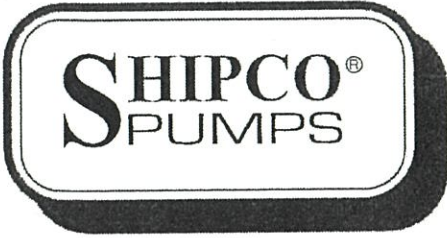
Y-183

Item	Quantity	Time per Unit (In Hours)	Total Time (In Hours)	Rate Per Hour	Total Labor Cost	Unit Material Cost	Equipment Cost	Total Material Cost	Total Subcontract Cost	Remarks
Subcontract (1) Name										
Subcontract (2) Name										
Subcontract (3) Name										
Mech Labor oil burner	0	0.00	0.00	\$120.00	\$ -	\$ -	\$ -	\$ -	\$ -	Proposal to replace vacuum condensate system in basic storage area (unit was under water):
Mech Labor Boiler/ weld	4	24.00	96.00	\$170.00	\$ 16,320.00	\$ -	\$ -	\$ -	\$ -	* We will lock out/tag out unit
	0	0.00	0.00	\$ -	\$ -	\$ -	\$ -	\$ -	\$ -	* We will remove old unit
		0.00	0.00	\$ -	\$ -	\$ -	\$ -	\$ -	\$ -	
Shipco Model #15LRV1	1	0.00	0.00	\$ -	\$ -	\$ 28,500.00	\$ -	\$ 28,500.00	\$ -	* We will supply & install new Shipco Model #15LRV1 Vacuum condensate system
Pipe, valves, fittings	1	0.00	0.00	\$ -	\$ -	\$ 800.00	\$ -	\$ 800.00	\$ -	
Electrical	1	0.00	0.00	\$ -	\$ -	\$ 350.00	\$ -	\$ 350.00	\$ -	
Misc. material	1	0.00	0.00	\$ -	\$ -	\$ 200.00	\$ -	\$ 200.00	\$ -	* We will tie-in all necessary piping with new isolation valves, check valves and fittings
		0.00	0.00	\$ -	\$ -	\$ -	\$ -	\$ -	\$ -	* We will tie into existing wiring
		0.00	0.00	\$ -	\$ -	\$ -	\$ -	\$ -	\$ -	* We will start up and check for proper operation
		0.00	0.00	\$ -	\$ -	\$ -	\$ -	\$ -	\$ -	
		0.00	0.00	\$ -	\$ -	\$ -	\$ -	\$ -	\$ -	
		0.00	0.00	\$ -	\$ -	\$ -	\$ -	\$ -	\$ -	
		0.00	0.00	\$ -	\$ -	\$ -	\$ -	\$ -	\$ -	
		0.00	0.00	\$ -	\$ -	\$ -	\$ -	\$ -	\$ -	
		0.00	0.00	\$ -	\$ -	\$ -	\$ -	\$ -	\$ -	
		0.00	0.00	\$ -	\$ -	\$ -	\$ -	\$ -	\$ -	LEAD TIME: 8-10 WEEKS
		0.00	0.00	\$ -	\$ -	\$ -	\$ -	\$ -	\$ -	
		0.00	0.00	\$ -	\$ -	\$ -	\$ -	\$ -	\$ -	
		0.00	0.00	\$ -	\$ -	\$ -	\$ -	\$ -	\$ -	
		0.00	0.00	\$ -	\$ -	\$ -	\$ -	\$ -	\$ -	
		0.00	0.00	\$ -	\$ -	\$ -	\$ -	\$ -	\$ -	
		0.00	0.00	\$ -	\$ -	\$ -	\$ -	\$ -	\$ -	
Totals			96.00		\$ 16,320.00		\$ -	\$ 29,850.00	\$ -	

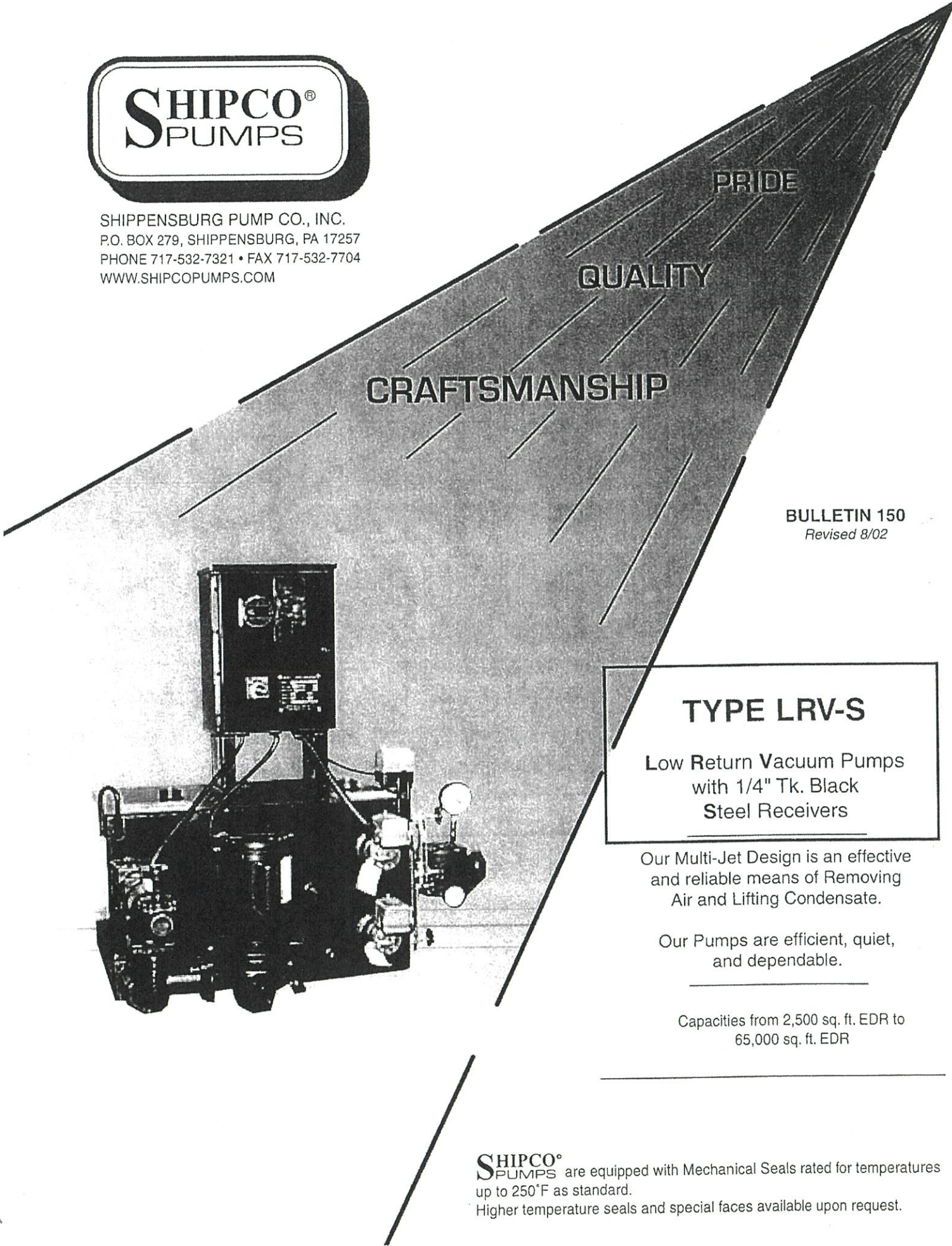
All work will be done during normal working hours
If any other material is needed, it will be at an additional charge

Subcontract (1)	\$	-	0%	\$	Labor	\$		\$	16,320.00
Subcontract (1)	\$	-	0%	\$	Material	\$	\$ 29,850.00	20%	\$ 35,820.00
Subcontract (2)	\$	-	0%	\$	Equipment	\$	\$ -	0%	\$ -
Subcontract (3)	\$	-	0%	\$	Subcontract	\$	\$ -	-	\$ -
Subcontract (3)	\$	-	0%	\$	Site Visit	\$	\$ -	-	\$ -
Total Subcontract			\$	-					\$ 52,140.00

Total Cost \$ 52,140.00



SHIPPENSBURG PUMP CO., INC.
 P.O. BOX 279, SHIPPENSBURG, PA 17257
 PHONE 717-532-7321 • FAX 717-532-7704
 WWW.SHIPCOPUMPS.COM

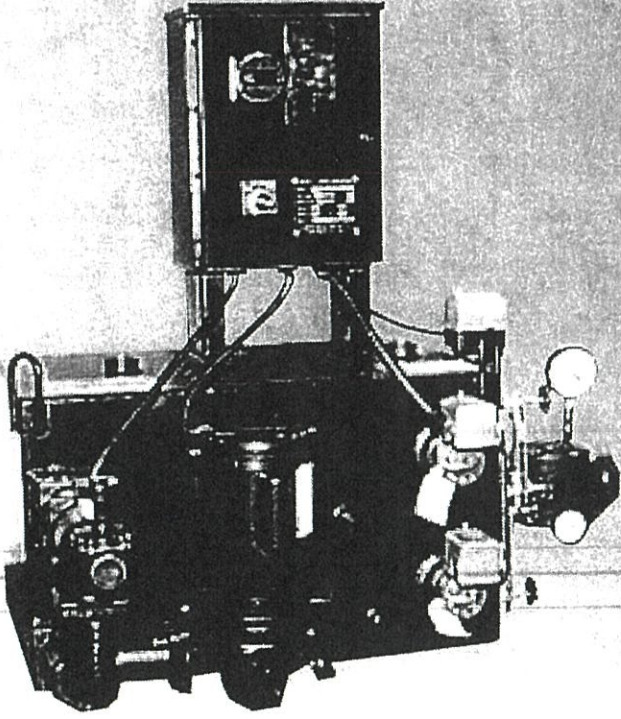


PRIDE

QUALITY

CRAFTSMANSHIP

BULLETIN 150
Revised 8/02



TYPE LRV-S
 Low Return Vacuum Pumps
 with 1/4" Tk. Black
 Steel Receivers

Our Multi-Jet Design is an effective and reliable means of Removing Air and Lifting Condensate.

Our Pumps are efficient, quiet, and dependable.

Capacities from 2,500 sq. ft. EDR to 65,000 sq. ft. EDR

SHIPCO[®] PUMPS are equipped with Mechanical Seals rated for temperatures up to 250°F as standard. Higher temperature seals and special faces available upon request.

LRV-S Units

LOW RETURN VACUUM UNITS are designed to produce a vacuum and pump condensate by means of a centrifugal pump and a nozzle venturi arrangement.

The receiver is divided into two compartments; the lower section is used as a condensate collection area. This section is under the same vacuum as the return lines in the system. The condensate is collected here and lifted by a vacuum lift to the upper compartment. The float switch in the lower compartment acti-

vates the centrifugal pump and causes a vacuum to be produced with the nozzle venturi arrangement and lifts the condensate to the upper compartment.

The upper section of the receiver is used to recycle the condensate and produce a vacuum, until such time as this section reaches a level, causing the float switch here to activate the discharge valve and pump, sending the condensate on to the boiler.

CAP. SQ. FT. EDR	GPM WATER ONLY	RATING AT 5-1/2" HG VACUUM AT 160° F SIMULTANEOUS		PUMP DISCH. SIZE, INCHES	PUMP DISCH. PRESS. PSIG	MOTOR HP		PHASE	SINGLE MODEL NO.	DUPLEX MODEL NO.
		WATER GPM	AIR CFM			3500 RPM	1750 RPM			
Up to 5,000	7-1/2	7	3	1-1/4"	20	3/4		1	5 LRV1-20-351	5 LRV2-20-351
					20	3/4		3	5 LRV1-20-353	5 LRV2-20-353
					20		1	1	5 LRV1-20-171	5 LRV2-20-171
					20		1	3	5 LRV1-20-173	5 LRV2-20-173
					30	1		1	5 LRV1-30-351	5 LRV2-30-351
					30	1		3	5 LRV1-30-353	5 LRV2-30-353
					30		1-1/2	3	5 LRV1-30-173	5 LRV2-30-173
					40	1-1/2		1	5 LRV1-40-351	5 LRV2-40-351
5,000 to 10,000	15	14	6	1-1/4"	20	1		1	10 LRV1-20-351	10 LRV2-20-351
					20	1		3	10 LRV1-20-353	10 LRV2-20-353
					20		1-1/2	3	10 LRV1-20-173	10 LRV2-20-173
					30	1-1/2		1	10 LRV1-30-351	10 LRV2-30-351
					30	1-1/2		3	10 LRV1-30-353	10 LRV2-30-353
					30		2	3	10 LRV1-30-173	10 LRV2-30-173
					40	2		3	10 LRV1-40-353	10 LRV2-40-353
					40	1-1/2		1	15 LRV1-20-351	15 LRV2-20-351
10,000 to 15,000	22-1/2	21	9	1-1/4"	20	1-1/2		3	15 LRV1-20-353	15 LRV2-20-353
					20		2	3	15 LRV1-20-173	15 LRV2-20-173
					30	2		3	15 LRV1-30-353	15 LRV2-30-353
					30		3	3	15 LRV1-30-173	15 LRV2-30-173
					40	3		3	15 LRV1-40-353	15 LRV2-40-353
					20	2		3	20 LRV1-20-353	20 LRV2-20-353
					20		2	3	20 LRV1-20-173	20 LRV2-20-173
					30	3		3	20 LRV1-30-353	20 LRV2-30-353
15,000 to 20,000	30	28	11	1-1/2"	30		3	3	20 LRV1-30-173	20 LRV2-30-173
					40	3		3	20 LRV1-40-353	20 LRV2-40-353
					20	3		3	25 LRV1-20-353	25 LRV2-20-353
					20		3	3	25 LRV1-20-173	25 LRV2-20-173
					30	5		3	25 LRV1-30-353	25 LRV2-30-353
					30		5	3	25 LRV1-30-173	25 LRV2-30-173
					40	5		3	25 LRV1-40-353	25 LRV2-40-353
					40		5	3	25 LRV1-40-173	25 LRV2-40-173
20,000 to 25,000	37-1/2	35	14	1-1/2"	20	3		3	30 LRV1-20-353	30 LRV2-20-353
					20		3	3	30 LRV1-20-173	30 LRV2-20-173
					30	5		3	30 LRV1-30-353	30 LRV2-30-353
					30		5	3	30 LRV1-30-173	30 LRV2-30-173
					40	5		3	30 LRV1-40-353	30 LRV2-40-353
					40		5	3	30 LRV1-40-173	30 LRV2-40-173
					20	3		3	40 LRV1-20-353	40 LRV2-20-353
					20		5	3	40 LRV1-20-173	40 LRV2-20-173
25,000 to 30,000	45	42	17	1-1/2"	30	5		3	40 LRV1-30-353	40 LRV2-30-353
					30		5	3	40 LRV1-30-173	40 LRV2-30-173
					40	5		3	40 LRV1-40-353	40 LRV2-40-353
					40		5	3	40 LRV1-40-173	40 LRV2-40-173
					20	3		3	40 LRV1-20-353	40 LRV2-20-353
					20		5	3	40 LRV1-20-173	40 LRV2-20-173
					30	5		3	40 LRV1-30-353	40 LRV2-30-353
					30		5	3	40 LRV1-30-173	40 LRV2-30-173
30,000 to 40,000	60	56	21	2"	20	3		3	65 LRV1-20-173	65 LRV2-20-173
					20		5	3	65 LRV1-20-353	65 LRV2-20-353
					30	5		3	65 LRV1-30-173	65 LRV2-30-173
					30		5	3	65 LRV1-30-353	65 LRV2-30-353
					20	3		3	65 LRV1-20-173	65 LRV2-20-173
					20		5	3	65 LRV1-20-353	65 LRV2-20-353
					30	5		3	65 LRV1-30-173	65 LRV2-30-173
					30		5	3	65 LRV1-30-353	65 LRV2-30-353
40,000 to 65,000	97-1/2	65	22	2"	20		5	3	65 LRV1-20-173	65 LRV2-20-173
					30		7-1/2	3	65 LRV1-30-173	65 LRV2-30-173

Ultimate Power Inc.
45 Nancy Street
West Babylon, New York 11704-1498

Attention: Tom Haarstick

Reference: PS 28, Yonkers NY

Subject: Shipco LRV Vacuum Condensate Unit for two locations in the same school

In sole accordance with our standard terms and conditions of sale, we are pleased to offer:

1 - SHIPCO 20LRV1-20-353 Duplex combination vacuum condensate pump package

consisting of 78 gallon steel receiver 1/4" thick, with inlet basket strainer, vacuum switch, float switch, (2) 2hp - 3500PM / 208 / 3 Voltage, motor pump assembly rated for 22-1/2 gpm @ 20 psig and 11 CFM @ 5.5" hg.. Unit furnished with pump suction isolation valve, discharge valve and to include factory mounted and wired UL Listed and labeled NEMA control panel incorporating starter, circuit breaker, selector switch, control circuit transformers, pilot light and numbered terminal strip. Discharge Piping is 1-1/4" NPT, Inlet Piping is at 2" NPT

Your net delivered, not unloaded, cost for (1) Vacuum Condensate unit

As listed above is at.....\$ 27,386.00

Option and a good idea to have (2) Bronze Isolation Butterfly type valve a..... \$ 1,994.00

1 - SHIPCO 15LRV1-20-353 Duplex combination vacuum condensate pump package

consisting of 53-78 gallon steel receiver 1/4" thick, with inlet basket strainer, vacuum switch, float switch, (2) 1-1/2hp - 3500PM / 208 / 3 Voltage, motor pump assembly rated for 21 gpm @ 20 psig and 9 CFM @ 5.5" hg.. Unit furnished with pump suction isolation valve, discharge valve and to include factory mounted and wired UL Listed and labeled NEMA control panel incorporating starter, circuit breaker, selector switch, control circuit transformers, pilot light and numbered terminal strip. Discharge Piping is 1-1/4" NPT, Inlet Piping is 2" NPT

Your net delivered, not unloaded, cost for (1) Vacuum Condensate unit

as listed above..... \$26,499.00

Option and a good idea to have (2) Bronze Isolation Butterfly type valves at..... \$1,994.00

We thank you for the opportunity to quote on the above equipment and ask you feel free to contact us with any questions you may have.

Sincerely,

Ray Bazini - (516) 610-3689

REPRESENTING

SHIPCO DEAERATORS/ CONDENSATE/ VACUUM AND BOILER FEED SYSTEMS, PATTERSON PUMPS
FLO-PAK PACKAGED SYSTEMS, CAMUS HYDRONIC BOILERS, ALDRICH BOILERS & WATER HEATERS
PRECISION BOILER, MIDCO GAS BURNER, ELBI USA EXPANSION EQUIPMENT, POLARIS HEAT EXCHANGERS
PENN PUMP PACKAGED SYSTEMS & FUEL OIL PUMPS, DELTA VARIABLE FREQUENCY DRIVES