



Valcon Contracting Corp.

185 Summerfield Street
Scarsdale, NY 10583
Tel: 718-652-0190

Insured: Cross Hill Contents

Estimator: Damian Reyes
Company: Valcon Contracting Corp.

Business: (718) 652-0190 x 106
E-mail: damian@valconcontractingcorp.com

Claim Number:

Policy Number:

Type of Loss:

Date of Loss: 9/2/2021 11:49 PM
Date Inspected:

Date Received:
Date Entered: 11/8/2021 11:48 AM

Price List: NYWP8X_SEP21
Restoration/Service/Remodel
Estimate: CROSS_HILL-CONTENTS

This loss was cleaned a 2nd. time after suspended ceiling installed and the room was full of dust. School officials demanded the 2nd. cleaning

See page 30 for total "Contents Loss" of
\$184,139.33.
The stated amount fully reimbursed by YPS
insurance carrier Travelers.



Valcon Contracting Corp.

185 Summerfield Street
Scarsdale, NY 10583
Tel: 718-652-0190

CROSS_HILL-CONTENTS

CROSS_HILL-CONTENTS

DESCRIPTION	QTY	REMOVE	REPLACE	TAX	TOTAL
1. Bubble Wrap - Add-on cost for fragile items	500.00 LF	0.00	0.23	0.00	115.00
2. Provide stretch film/wrap	1.00 RL	0.00	26.94	0.00	26.94
3. Inventory, Packing, Boxing, and Moving charge - per hour	96.00 HR	0.00	55.76	0.00	5,352.96
4 workers 8 hours each for 3 days to move packed contents from the room that it was packed to another room.					
4. Personal protective mask (N-95)	150.00 EA	0.00	4.10	0.00	615.00
Total: CROSS_HILL-CONTENTS				0.00	6,109.90

Basement

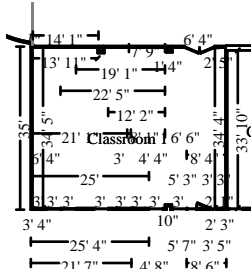
Basement

DESCRIPTION	QTY	REMOVE	REPLACE	TAX	TOTAL
5. Clean Electric Items (Bid Item)	1.00 EA	0.00	34,753.00	0.00	34,753.00
Ers of Nothern NJ & Hudson Valley 17 Leslie Ct., Whippany NJ 07981 862-259-2413 Invoice # 01613					
Total: Basement				0.00	34,753.00



Valcon Contracting Corp.

185 Summerfield Street
 Scarsdale, NY 10583
 Tel: 718-652-0190



Classroom 1

Height: 13' 5"

1,952.58 SF Walls	1,421.90 SF Ceiling
3,374.48 SF Walls & Ceiling	1,421.90 SF Floor
157.99 SY Flooring	148.22 LF Floor Perimeter
157.55 LF Ceil. Perimeter	

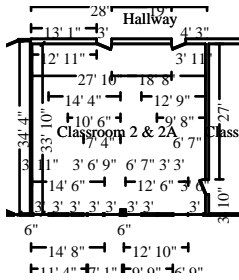
Window	3' X 3'	Opens into Exterior
Window	3' X 3'	Opens into Exterior
Window	3' X 3'	Opens into Exterior
Window	3' X 3'	Opens into Exterior
Window	3' X 3'	Opens into Exterior
Window	3' X 3'	Opens into Exterior
Window	3' X 3'	Opens into Exterior
Window	3' X 3'	Opens into Exterior
Window	3' X 3'	Opens into Exterior
Door	3' X 6' 8"	Opens into Exterior
Window	3' X 3'	Opens into Exterior
Window	3' X 3'	Opens into Exterior
Door	6' 4" X 6' 8"	Opens into HALLWAY

DESCRIPTION	QTY	REMOVE	REPLACE	TAX	TOTAL
*****CLEANING*****					
6. Clean chair	6.00 EA	0.00	13.85	0.00	83.10
7. Clean furniture	14.00 EA	0.00	38.83	0.00	543.62
8. Clean desk	4.00 EA	0.00	26.25	0.00	105.00
9. Clean bookcase (per sf of face area)	100.00 SF	0.00	1.66	0.00	166.00
10. Clean bookcase contents	40.00 LF	0.00	9.68	0.00	387.20
11. Cleaning Technician - incl. cleaning agent - per hour	1.00 HR	0.00	47.11	0.00	47.11
To clean a divider 16LF and miscellaneous contents					
*****PACK-OUT*****					
12. Evaluate, tag, & inventory miscellaneous - per item	1.00 EA	0.00	9.43	0.00	9.43
Totals: Classroom 1				0.00	1,341.46



Valcon Contracting Corp.

185 Summerfield Street
 Scarsdale, NY 10583
 Tel: 718-652-0190



Classroom 2 & 2A

Height: 13' 5"

1,672.86 SF Walls	1,168.66 SF Ceiling
2,841.51 SF Walls & Ceiling	1,168.66 SF Floor
129.85 SY Flooring	129.63 LF Floor Perimeter
138.47 LF Ceil. Perimeter	

Door	3' X 6' 8"	Opens into CLASSROOM_2
Door	2' 10" X 6' 8"	Opens into HALLWAY
Door	3' X 6' 8"	Opens into HALLWAY
Window	3' X 3'	Opens into Exterior
Window	3' X 3'	Opens into Exterior
Window	3' X 3'	Opens into Exterior
Window	3' X 3'	Opens into Exterior
Window	3' X 3'	Opens into Exterior
Window	3' X 3'	Opens into Exterior
Window	3' X 3'	Opens into Exterior
Window	3' X 3'	Opens into Exterior
Window	3' X 3'	Opens into Exterior
Window	3' X 3'	Opens into Exterior
Window	3' X 3'	Opens into Exterior
Window	3' X 3'	Opens into Exterior
Window	3' X 3'	Opens into Exterior

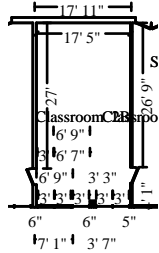
DESCRIPTION	QTY	REMOVE	REPLACE	TAX	TOTAL
*****CLEANING*****					
13. Clean chair	76.00 EA	0.00	13.85	0.00	1,052.60
14. Clean furniture - small	6.00 EA	0.00	28.05	0.00	168.30
15. Clean furniture	34.00 EA	0.00	38.83	0.00	1,320.22
16. Clean bookcase (per sf of face area)	40.00 SF	0.00	1.66	0.00	66.40
17. Clean bookcase contents	5.00 LF	0.00	9.68	0.00	48.40
18. Clean misc items - per Sml box - high density - Hvy Clean	6.00 EA	0.00	117.92	0.00	707.52
*****PACK-OUT*****					
19. Eval. pack & invent. misc items - per Sml box-high density	6.00 EA	0.00	21.62	0.00	129.72
20. Evaluate, tag, & inventory miscellaneous - per item	1.00 EA	0.00	9.43	0.00	9.43

Totals: Classroom 2 & 2A 0.00 3,502.59



Valcon Contracting Corp.

185 Summerfield Street
 Scarsdale, NY 10583
 Tel: 718-652-0190



Classroom 2B

Height: 13' 5"

1,294.57 SF Walls	588.43 SF Ceiling
1,883.00 SF Walls & Ceiling	588.43 SF Floor
65.38 SY Flooring	98.17 LF Floor Perimeter
104.17 LF Ceil. Perimeter	

Door	3' X 6' 8"	Opens into CLASSROOM_4
Door	3' X 6' 8"	Opens into CLASSROOM_2_
Window	3' X 3'	Opens into Exterior
Window	3' X 3'	Opens into Exterior
Window	3' X 3'	Opens into Exterior
Window	3' X 3'	Opens into Exterior
Window	3' X 3'	Opens into Exterior
Window	3' X 3'	Opens into Exterior

DESCRIPTION	QTY	REMOVE	REPLACE	TAX	TOTAL
*****CLEANING*****					
21. Clean chair	4.00 EA	0.00	13.85	0.00	55.40
22. Clean furniture - small	2.00 EA	0.00	28.05	0.00	56.10
23. Clean furniture	2.00 EA	0.00	38.83	0.00	77.66
24. Clean bookcase (per sf of face area)	52.00 SF	0.00	1.66	0.00	86.32
25. Clean bookcase contents	7.00 LF	0.00	9.68	0.00	67.76
26. Clean file cabinet - two drawer - metal	2.00 EA	0.00	15.97	0.00	31.94
27. Clean misc items - per Sml box - high density - Hvy Clean	13.00 EA	0.00	117.92	0.00	1,532.96
*****PACK-OUT*****					
28. Eval. pack & invent. misc items - per Sml box-high density	13.00 EA	0.00	21.62	0.00	281.06
29. Evaluate, tag, & inventory miscellaneous - per item	1.00 EA	0.00	9.43	0.00	9.43
Totals: Classroom 2B				0.00	2,198.63



Valcon Contracting Corp.

185 Summerfield Street
 Scarsdale, NY 10583
 Tel: 718-652-0190



Classroom 3A

Height: 13' 5"

907.51 SF Walls	243.61 SF Ceiling
1,151.13 SF Walls & Ceiling	243.61 SF Floor
27.07 SY Flooring	65.23 LF Floor Perimeter
82.07 LF Ceil. Perimeter	

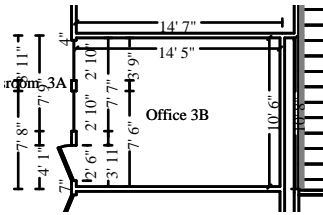
Door	3' X 6' 8"	Opens into CLASSROOM_2
Door	5' 10" X 6' 8"	Opens into HALLWAY
Door	3' X 6' 8"	Opens into STORAGE_AREA
Window	2' 10" X 4'	Opens into OFFICE_3B
Window	2' 10" X 4'	Opens into OFFICE_3B
Door	2' 6" X 6' 8"	Opens into OFFICE_3B
Door	2' 6" X 6' 8"	Opens into OFFICE_3C
Window	2' 10" X 4'	Opens into OFFICE_3C
Window	2' 10" X 4'	Opens into OFFICE_3C
Window	3' X 3'	Opens into Exterior
Window	3' X 3'	Opens into Exterior
Window	3' X 3'	Opens into Exterior
Window	3' X 3'	Opens into Exterior

DESCRIPTION	QTY	REMOVE	REPLACE	TAX	TOTAL
*****CLEANING*****					
30. Clean chair	6.00 EA	0.00	13.85	0.00	83.10
31. Clean furniture - small	6.00 EA	0.00	28.05	0.00	168.30
32. Clean furniture	2.00 EA	0.00	38.83	0.00	77.66
33. Clean misc items - per Sml box - high density - Hvy Clean	45.00 EA	0.00	117.92	0.00	5,306.40
34. Clean misc items - per Med box - high density - Hvy Clean	1.00 EA	0.00	143.59	0.00	143.59
*****PACK-OUT*****					
35. Eval. pack & invent. misc items - per Sml box-high density	45.00 EA	0.00	21.62	0.00	972.90
36. Eval. pack & invent. misc items - per Med box-high density	1.00 EA	0.00	26.31	0.00	26.31
37. Evaluate, tag, & inventory miscellaneous - per item	1.00 EA	0.00	9.43	0.00	9.43
Totals: Classroom 3A				0.00	6,787.69



Valcon Contracting Corp.

185 Summerfield Street
 Scarsdale, NY 10583
 Tel: 718-652-0190



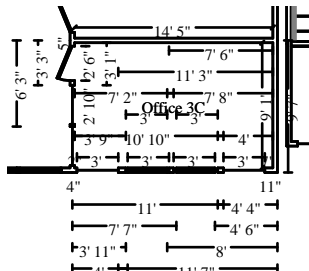
Office 3B

Height: 13' 2"

615.92 SF Walls	151.02 SF Ceiling
766.94 SF Walls & Ceiling	151.02 SF Floor
16.78 SY Flooring	47.27 LF Floor Perimeter
49.77 LF Ceil. Perimeter	

Window	2' 10" X 4'	Opens into CLASSROOM_4
Window	2' 10" X 4'	Opens into CLASSROOM_4
Door	2' 6" X 6' 8"	Opens into CLASSROOM_4

DESCRIPTION	QTY	REMOVE	REPLACE	TAX	TOTAL
38. Clean refrigerator - exterior	1.00 EA	0.00	21.63	0.00	21.63
39. Clean file cabinet - two drawer - metal	1.00 EA	0.00	15.97	0.00	15.97
40. Clean bookcase (per sf of face area)	18.00 SF	0.00	1.66	0.00	29.88
41. Clean bookcase contents	6.00 LF	0.00	9.68	0.00	58.08
Totals: Office 3B				0.00	125.56



Office 3C

Height: 13' 4"

532.44 SF Walls	130.65 SF Ceiling
663.08 SF Walls & Ceiling	130.65 SF Floor
14.52 SY Flooring	44.43 LF Floor Perimeter
46.93 LF Ceil. Perimeter	

Door	2' 6" X 6' 8"	Opens into CLASSROOM_4
Window	2' 10" X 4'	Opens into CLASSROOM_4
Window	2' 10" X 4'	Opens into CLASSROOM_4
Window	3' X 3'	Opens into Exterior
Window	3' X 3'	Opens into Exterior
Window	3' X 3'	Opens into Exterior
Window	3' X 3'	Opens into Exterior
Window	3' X 3'	Opens into Exterior
Window	3' X 3'	Opens into Exterior

DESCRIPTION	QTY	REMOVE	REPLACE	TAX	TOTAL
42. Clean file cabinet - four drawer - metal	1.00 EA	0.00	31.77	0.00	31.77
43. Clean furniture	1.00 EA	0.00	38.83	0.00	38.83

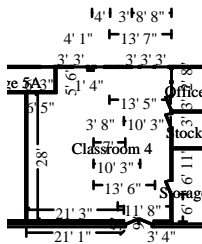


Valcon Contracting Corp.

185 Summerfield Street
 Scarsdale, NY 10583
 Tel: 718-652-0190

CONTINUED - Office 3C

DESCRIPTION	QTY	REMOVE	REPLACE	TAX	TOTAL
44. Clean bookcase (per sf of face area)	24.00 SF	0.00	1.66	0.00	39.84
45. Clean bookcase contents	8.00 LF	0.00	9.68	0.00	77.44
Totals: Office 3C				0.00	187.88



Classroom 4

Height: 13' 3"

1,542.21 SF Walls	1,026.57 SF Ceiling
2,568.78 SF Walls & Ceiling	1,026.57 SF Floor
114.06 SY Flooring	118.15 LF Floor Perimeter
132.90 LF Ceil. Perimeter	

Door	3' X 6' 8"	Opens into STORAGE_4A
Door	3' X 6' 8"	Opens into STOCK_4B
Window	2' 8" X 4'	Opens into OFFICE_4C2
Window	2' 8" X 4'	Opens into OFFICE_4C2
Door	3' X 6' 8"	Opens into OFFICE_4C2
Window	3' X 3'	Opens into Exterior
Window	2' 11 15/16" X 4' 7/16"	Opens into Exterior
Window	3' X 3'	Opens into Exterior
Window	3' 1/8" X 3' 11 1/2"	Opens into Exterior
Window	3' X 3'	Opens into Exterior
Window	3' X 3'	Opens into Exterior
Window	3' X 3'	Opens into Exterior
Window	3' X 3'	Opens into Exterior
Window	2' 11 13/16" X 4' 3/16"	Opens into Exterior
Window	3' X 3'	Opens into Exterior
Door	5' 9" X 6' 8"	Opens into HALLWAY

DESCRIPTION	QTY	REMOVE	REPLACE	TAX	TOTAL
*****CLEANING*****					
46. Clean chair	54.00 EA	0.00	13.85	0.00	747.90
47. Clean stool	14.00 EA	0.00	13.88	0.00	194.32
48. Clean furniture - small	6.00 EA	0.00	28.05	0.00	168.30
49. Clean furniture	22.00 EA	0.00	38.83	0.00	854.26
50. Clean television stand	1.00 EA	0.00	16.47	0.00	16.47
51. Clean bookcase (per sf of face area)	144.00 SF	0.00	1.66	0.00	239.04

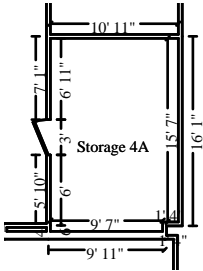


Valcon Contracting Corp.

185 Summerfield Street
 Scarsdale, NY 10583
 Tel: 718-652-0190

CONTINUED - Classroom 4

DESCRIPTION	QTY	REMOVE	REPLACE	TAX	TOTAL
52. Clean bookcase contents	38.00 LF	0.00	9.68	0.00	367.84
53. Clean misc items - per Sml box - high density - Hvy Clean	223.00 EA	0.00	117.92	0.00	26,296.16
54. Clean misc items - per Med box - high density - Hvy Clean	19.00 EA	0.00	143.59	0.00	2,728.21
*****PACK-OUT*****					
55. Eval. pack & invent. misc items - per Sml box-high density	223.00 EA	0.00	21.62	0.00	4,821.26
56. Eval. pack & invent. misc items - per Med box-high density	19.00 EA	0.00	26.31	0.00	499.89
57. Evaluate, tag, & inventory miscellaneous - per item	1.00 EA	0.00	9.43	0.00	9.43
58. Clean electric fan - portable	1.00 EA	0.00	34.98	0.00	34.98
Totals: Classroom 4				0.00	36,978.06



Storage 4A

Height: 13' 3"

703.40 SF Walls	177.58 SF Ceiling
880.98 SF Walls & Ceiling	177.58 SF Floor
19.73 SY Flooring	51.60 LF Floor Perimeter
54.60 LF Ceil. Perimeter	

DESCRIPTION	QTY	REMOVE	REPLACE	TAX	TOTAL
Door			3' X 6' 8" Opens into CLASSROOM_5		
59. Clean bookcase (per sf of face area)	180.00 SF	0.00	1.66	0.00	298.80
60. Clean bookcase contents	60.00 LF	0.00	9.68	0.00	580.80
Totals: Storage 4A				0.00	879.60

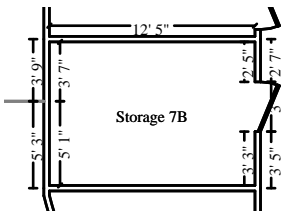


Valcon Contracting Corp.

185 Summerfield Street
 Scarsdale, NY 10583
 Tel: 718-652-0190

CONTINUED - Classroom 7

DESCRIPTION	QTY	REMOVE	REPLACE	TAX	TOTAL
77. Clean misc items - per Med box - high density - Hvy Clean	3.00 EA	0.00	143.59	0.00	430.77
78. Clean bookcase contents	4.00 LF	0.00	9.68	0.00	38.72
79. Clean television stand	1.00 EA	0.00	16.47	0.00	16.47
*****PACK-OUT*****					
80. Eval. pack & invent. misc items - per Sml box-high density	134.00 EA	0.00	21.62	0.00	2,897.08
81. Eval. pack & invent. misc items - per Med box-high density	3.00 EA	0.00	26.31	0.00	78.93
82. Evaluate, tag, & inventory miscellaneous - per item	1.00 EA	0.00	9.43	0.00	9.43
Totals: Classroom 7				0.00	21,291.06



Storage 7B

Height: 10'

401.68 SF Walls	107.62 SF Ceiling
509.30 SF Walls & Ceiling	107.62 SF Floor
11.96 SY Flooring	39.17 LF Floor Perimeter
42.17 LF Ceil. Perimeter	

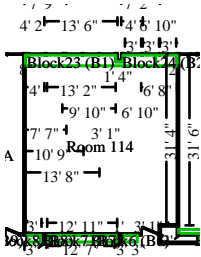
DESCRIPTION	QTY	REMOVE	REPLACE	TAX	TOTAL
83. Clean shelving - Metal	75.00 LF	0.00	1.95	0.00	146.25
Totals: Storage 7B				0.00	146.25
Total: Basement				0.00	134,769.18

Main Level



Valcon Contracting Corp.

185 Summerfield Street
 Scarsdale, NY 10583
 Tel: 718-652-0190



Room 114

Height: 10'

977.07 SF Walls	918.68 SF Ceiling
1,895.75 SF Walls & Ceiling	864.27 SF Floor
96.03 SY Flooring	86.98 LF Floor Perimeter
124.62 LF Ceil. Perimeter	

Window	2' 10" X 7'	Opens into Exterior
Window	2' 10" X 7'	Opens into Exterior
Window	2' 10" X 7'	Opens into Exterior
Window	2' 10" X 7'	Opens into Exterior
Window	2' 10" X 7'	Opens into Exterior
Window	3' X 7'	Opens into Exterior
Window	3' X 7'	Opens into Exterior
Window	3' X 7'	Opens into Exterior
Door	3' 1" X 6' 8"	Opens into HALLWAY

DESCRIPTION	QTY	REMOVE	REPLACE	TAX	TOTAL
84. Clean chair	38.00 EA	0.00	13.85	0.00	526.30
85. Clean stool	2.00 EA	0.00	13.88	0.00	27.76
86. Clean furniture - small	36.00 EA	0.00	28.05	0.00	1,009.80
87. Clean furniture	4.00 EA	0.00	38.83	0.00	155.32
88. Clean furniture - large	4.00 EA	0.00	60.39	0.00	241.56
89. Clean desk	2.00 EA	0.00	26.25	0.00	52.50
90. Clean desk contents	8.00 LF	0.00	9.56	0.00	76.48
91. Clean office chair	2.00 EA	0.00	45.13	0.00	90.26
92. Clean bookcase (per sf of face area)	43.00 SF	0.00	1.66	0.00	71.38
93. Clean bookcase contents	14.00 LF	0.00	9.68	0.00	135.52
94. Cleaning Technician - incl. cleaning agent - per hour	16.00 HR	0.00	47.11	0.00	753.76
2 workers 4 hours each to clean miscellaneous contents in this room twice					
95. Clean wastebasket/garbage/trash can	2.00 EA	0.00	6.24	0.00	12.48
96. Clean electric fan - portable	4.00 EA	0.00	34.98	0.00	139.92
97. Clean file cabinet - two drawer - metal	4.00 EA	0.00	15.97	0.00	63.88
98. Clean file cabinet - four drawer - metal	2.00 EA	0.00	31.77	0.00	63.54
99. Clean cabinet contents	48.17 LF	0.00	16.55	0.00	797.21
100. Clean window blind - roll up	3.00 EA	0.00	26.98	0.00	80.94

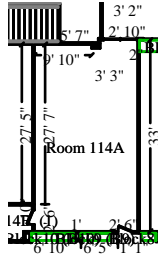


Valcon Contracting Corp.

185 Summerfield Street
 Scarsdale, NY 10583
 Tel: 718-652-0190

CONTINUED - Room 114

DESCRIPTION	QTY	REMOVE	REPLACE	TAX	TOTAL
Totals: Room 114				0.00	4,298.61

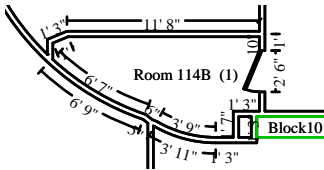


Room 114A

Height: 10'

956.85 SF Walls	578.75 SF Ceiling
1,535.60 SF Walls & Ceiling	578.75 SF Floor
64.31 SY Flooring	97.98 LF Floor Perimeter
102.98 LF Ceil. Perimeter	

Window	2' 10" X 7'	Opens into Exterior
Window	2' 10" X 7'	Opens into Exterior
Door	2' 6" X 6' 8"	Opens into HALLWAY



Subroom: Room 114B (1)

Height: 9'

284.02 SF Walls	55.80 SF Ceiling
339.82 SF Walls & Ceiling	55.80 SF Floor
6.20 SY Flooring	30.91 LF Floor Perimeter
33.41 LF Ceil. Perimeter	

Door	2' 6" X 6' 8"	Opens into ROOM_114A
------	---------------	----------------------

DESCRIPTION	QTY	REMOVE	REPLACE	TAX	TOTAL
101. Clean chair	24.00 EA	0.00	13.85	0.00	332.40
102. Clean furniture	6.00 EA	0.00	38.83	0.00	232.98
103. Clean furniture - small	8.00 EA	0.00	28.05	0.00	224.40
104. Clean desk	4.00 EA	0.00	26.25	0.00	105.00
105. Clean desk contents	6.00 LF	0.00	9.56	0.00	57.36
106. Clean office chair	4.00 EA	0.00	45.13	0.00	180.52
107. Cleaning Technician - incl. cleaning agent - per hour	16.00 HR	0.00	47.11	0.00	753.76

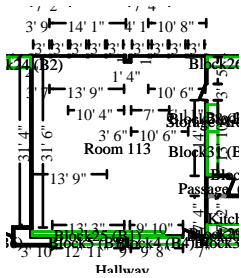
2 workers 4 hours each to clean miscellaneous contents in this room twice. Large amount of contents

Totals: Room 114A				0.00	1,886.42
-------------------	--	--	--	------	----------



Valcon Contracting Corp.

185 Summerfield Street
 Scarsdale, NY 10583
 Tel: 718-652-0190



Room 113

Height: 10'

1,014.56 SF Walls	1,052.99 SF Ceiling
2,067.55 SF Walls & Ceiling	1,034.84 SF Floor
114.98 SY Flooring	100.86 LF Floor Perimeter
131.90 LF Ceil. Perimeter	

Door	3' X 6' 8"	Opens into STORAGE_ARE2
Door	3' 1" X 6' 8"	Opens into HALLWAY
Window	3' X 7'	Opens into Exterior
Window	3' X 7'	Opens into Exterior
Window	3' X 7'	Opens into Exterior
Window	3' X 7'	Opens into Exterior
Window	3' X 7'	Opens into Exterior
Window	3' X 7'	Opens into Exterior
Window	3' X 7'	Opens into Exterior
Window	3' X 7'	Opens into Exterior

DESCRIPTION	QTY	REMOVE	REPLACE	TAX	TOTAL
108. Clean chair	58.00 EA	0.00	13.85	0.00	803.30
109. Clean furniture - small	14.00 EA	0.00	28.05	0.00	392.70
110. Clean furniture	6.00 EA	0.00	38.83	0.00	232.98
111. Clean furniture - large	2.00 EA	0.00	60.39	0.00	120.78
112. Clean desk	2.00 EA	0.00	26.25	0.00	52.50
113. Clean desk contents	8.00 LF	0.00	9.56	0.00	76.48
114. Clean bookcase (per sf of face area)	80.00 SF	0.00	1.66	0.00	132.80
115. Clean bookcase contents	28.00 LF	0.00	9.68	0.00	271.04
116. Cleaning Technician - incl. cleaning agent - per hour	16.00 HR	0.00	47.11	0.00	753.76
2 workers 4 hours each to clean miscellaneous contents in this room twice					
117. Clean wastebasket/garbage/trash can	2.00 EA	0.00	6.24	0.00	12.48
118. Clean file cabinet - two drawer - metal	2.00 EA	0.00	15.97	0.00	31.94
119. Clean cabinet - metal	2.00 EA	0.00	31.77	0.00	63.54
120. Clean cabinet contents	48.33 LF	0.00	16.55	0.00	799.86
121. Clean electric fan - portable	2.00 EA	0.00	34.98	0.00	69.96
122. Clean file cabinet - four drawer - metal	2.00 EA	0.00	31.77	0.00	63.54

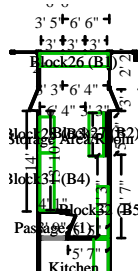


Valcon Contracting Corp.

185 Summerfield Street
 Scarsdale, NY 10583
 Tel: 718-652-0190

CONTINUED - Room 113

DESCRIPTION	QTY	REMOVE	REPLACE	TAX	TOTAL
Totals: Room 113				0.00	3,877.66



Storage Area/Room

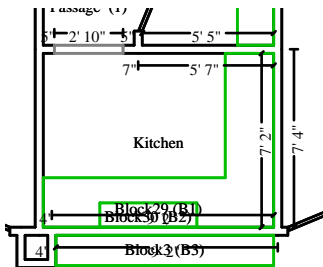
Height: 10'

414.65 SF Walls	223.17 SF Ceiling
637.82 SF Walls & Ceiling	157.32 SF Floor
17.48 SY Flooring	38.39 LF Floor Perimeter
71.33 LF Ceil. Perimeter	

Door	3' X 6' 8"	Opens into ROOM_112
Window	2' 6" X 3' 6"	Opens into ROOM_112
Door	2' 6" X 6' 8"	Opens into PASSAGE
Door	3' X 6' 8"	Opens into ROOM_113
Window	3' X 7'	Opens into Exterior
Window	3' X 7'	Opens into Exterior
Window	3' X 7'	Opens into Exterior

DESCRIPTION	QTY	REMOVE	REPLACE	TAX	TOTAL
123. Clean cabinet contents	31.00 LF	0.00	16.55	0.00	513.05
124. Clean cabinet contents - large amt	10.00 LF	0.00	19.70	0.00	197.00
125. Clean bookcase contents	30.00 LF	0.00	9.68	0.00	290.40
126. Cleaning Technician - incl. cleaning agent - per hour	16.00 HR	0.00	47.11	0.00	753.76
127. Clean electric fan - portable	2.00 EA	0.00	34.98	0.00	69.96
128. Clean window blind - roll up	3.00 EA	0.00	26.98	0.00	80.94

Totals: Storage Area/Room				0.00	1,905.11
---------------------------	--	--	--	------	----------



Kitchen

Height: 8'

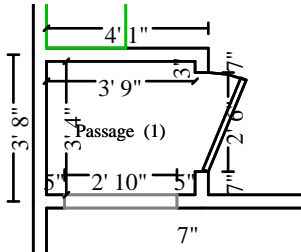
175.67 SF Walls	68.08 SF Ceiling
243.75 SF Walls & Ceiling	38.48 SF Floor
4.28 SY Flooring	9.80 LF Floor Perimeter
33.33 LF Ceil. Perimeter	



Valcon Contracting Corp.

185 Summerfield Street
 Scarsdale, NY 10583
 Tel: 718-652-0190

CONTINUED - Kitchen



Subroom: Passage (1)

Height: 8'

78.24 SF Walls	12.61 SF Ceiling
90.85 SF Walls & Ceiling	12.61 SF Floor
1.40 SY Flooring	8.89 LF Floor Perimeter
14.22 LF Ceil. Perimeter	

Missing Wall - Goes to Floor

2' 10" X 6' 8"

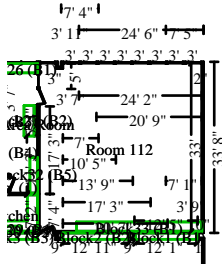
Opens into KITCHEN

Door

2' 6" X 6' 8"

Opens into STORAGE_ARE2

DESCRIPTION	QTY	REMOVE	REPLACE	TAX	TOTAL
129. Clean cabinet contents - kitchen	37.33 LF	0.00	16.55	0.00	617.81
130. Clean countertop appliance	4.00 EA	0.00	14.37	0.00	57.48
131. Clean refrigerator - exterior	1.00 EA	0.00	21.63	0.00	21.63
Totals: Kitchen				0.00	696.92



Room 112

Height: 10'

1,007.25 SF Walls	1,054.66 SF Ceiling
2,061.91 SF Walls & Ceiling	1,009.44 SF Floor
112.16 SY Flooring	100.00 LF Floor Perimeter
132.00 LF Ceil. Perimeter	

Door	2' 6" X 6' 8"	Opens into HALLWAY
Door	3' X 6' 8"	Opens into STORAGE_ARE2
Window	2' 6" X 3' 6"	Opens into STORAGE_ARE2
Window	2' 10" X 7'	Opens into Exterior
Window	3' X 7'	Opens into Exterior
Window	3' X 7'	Opens into Exterior
Window	3' X 7'	Opens into Exterior
Window	3' X 7'	Opens into Exterior
Window	3' X 7'	Opens into Exterior
Window	3' X 7'	Opens into Exterior
Window	3' X 7'	Opens into Exterior
Window	3' X 7'	Opens into Exterior

DESCRIPTION	QTY	REMOVE	REPLACE	TAX	TOTAL
132. Clean chair	52.00 EA	0.00	13.85	0.00	720.20



Valcon Contracting Corp.

185 Summerfield Street
Scarsdale, NY 10583
Tel: 718-652-0190

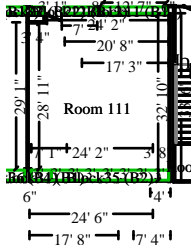
CONTINUED - Room 112

DESCRIPTION	QTY	REMOVE	REPLACE	TAX	TOTAL
133. Clean stool	6.00 EA	0.00	13.88	0.00	83.28
134. Clean table - occasional	2.00 EA	0.00	15.22	0.00	30.44
135. Clean furniture - small	12.00 EA	0.00	28.05	0.00	336.60
136. Clean furniture	16.00 EA	0.00	38.83	0.00	621.28
137. Clean furniture - large	2.00 EA	0.00	60.39	0.00	120.78
138. Clean desk	2.00 EA	0.00	26.25	0.00	52.50
139. Clean desk contents	8.00 LF	0.00	9.56	0.00	76.48
140. Clean office chair	4.00 EA	0.00	45.13	0.00	180.52
141. Clean bookcase (per sf of face area)	76.00 SF	0.00	1.66	0.00	126.16
142. Clean bookcase contents	17.00 LF	0.00	9.68	0.00	164.56
143. Cleaning Technician - incl. cleaning agent - per hour	16.00 HR	0.00	47.11	0.00	753.76
2 workers 4 hours each to clean miscellaneous contents in this room twice					
144. Clean wastebasket/garbage/trash can	2.00 EA	0.00	6.24	0.00	12.48
145. Clean electric fan - portable	2.00 EA	0.00	34.98	0.00	69.96
146. Clean file cabinet - two drawer - metal	2.00 EA	0.00	15.97	0.00	31.94
147. Clean cabinet - metal	2.00 EA	0.00	31.77	0.00	63.54
148. Clean cabinet contents	49.33 LF	0.00	16.55	0.00	816.41
149. Clean window blind - roll up	6.00 EA	0.00	26.98	0.00	161.88
Totals: Room 112				0.00	4,422.77



Valcon Contracting Corp.

185 Summerfield Street
 Scarsdale, NY 10583
 Tel: 718-652-0190



Room 111

Height: 10'

947.38 SF Walls	908.77 SF Ceiling
1,856.15 SF Walls & Ceiling	854.06 SF Floor
94.90 SY Flooring	87.00 LF Floor Perimeter
121.43 LF Ceil. Perimeter	

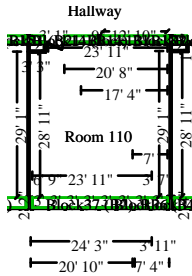
Window	3' X 7'	Opens into Exterior
Window	3' X 7'	Opens into Exterior
Window	3' X 7'	Opens into Exterior
Window	3' X 7'	Opens into Exterior
Window	3' X 7'	Opens into Exterior
Window	3' X 7'	Opens into Exterior
Window	3' X 7'	Opens into Exterior
Door	3' 1" X 6' 8"	Opens into HALLWAY

DESCRIPTION	QTY	REMOVE	REPLACE	TAX	TOTAL
150. Clean chair	74.00 EA	0.00	13.85	0.00	1,024.90
151. Clean furniture - small	4.00 EA	0.00	28.05	0.00	112.20
152. Clean furniture	10.00 EA	0.00	38.83	0.00	388.30
153. Clean furniture - large	1.00 EA	0.00	60.39	0.00	60.39
154. Clean desk	2.00 EA	0.00	26.25	0.00	52.50
155. Clean desk contents	8.00 LF	0.00	9.56	0.00	76.48
156. Clean office chair	4.00 EA	0.00	45.13	0.00	180.52
157. Clean bookcase (per sf of face area)	25.50 SF	0.00	1.66	0.00	42.33
158. Clean bookcase contents	12.00 LF	0.00	9.68	0.00	116.16
159. Cleaning Technician - incl. cleaning agent - per hour	16.00 HR	0.00	47.11	0.00	753.76
2 workers 4 hours each to clean miscellaneous contents in this room twice					
160. Clean wastebasket/garbage/trash can	2.00 EA	0.00	6.24	0.00	12.48
161. Clean electric fan - portable	2.00 EA	0.00	34.98	0.00	69.96
162. Clean coat rack	2.00 EA	0.00	20.48	0.00	40.96
163. Clean cabinet contents	54.67 LF	0.00	16.55	0.00	904.79
Totals: Room 111				0.00	3,835.73



Valcon Contracting Corp.

185 Summerfield Street
 Scarsdale, NY 10583
 Tel: 718-652-0190



Room 110

Height: 10'

953.29 SF Walls	915.77 SF Ceiling
1,869.05 SF Walls & Ceiling	861.73 SF Floor
95.75 SY Flooring	87.84 LF Floor Perimeter
121.94 LF Ceil. Perimeter	

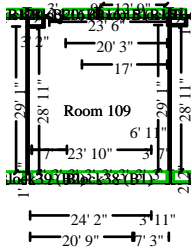
Window	3' X 7'	Opens into Exterior
Window	3' X 7'	Opens into Exterior
Window	3' X 7'	Opens into Exterior
Window	3' X 7'	Opens into Exterior
Window	3' X 7'	Opens into Exterior
Window	3' X 7'	Opens into Exterior
Window	3' X 7'	Opens into Exterior
Door	3' 1" X 6' 8"	Opens into HALLWAY

DESCRIPTION	QTY	REMOVE	REPLACE	TAX	TOTAL
164. Clean chair	70.00 EA	0.00	13.85	0.00	969.50
165. Clean furniture - small	8.00 EA	0.00	28.05	0.00	224.40
166. Clean furniture	22.00 EA	0.00	38.83	0.00	854.26
167. Clean furniture - large	1.00 EA	0.00	60.39	0.00	60.39
168. Clean desk	2.00 EA	0.00	26.25	0.00	52.50
169. Clean desk contents	8.00 LF	0.00	9.56	0.00	76.48
170. Clean bookcase (per sf of face area)	53.00 SF	0.00	1.66	0.00	87.98
171. Clean bookcase contents	24.00 LF	0.00	9.68	0.00	232.32
172. Cleaning Technician - incl. cleaning agent - per hour	16.00 HR	0.00	47.11	0.00	753.76
2 workers 4 hours each to clean miscellaneous contents in this room twice					
173. Clean wastebasket/garbage/trash can	2.00 EA	0.00	6.24	0.00	12.48
174. Clean electric fan - portable	4.00 EA	0.00	34.98	0.00	139.92
175. Clean cabinet contents	54.00 LF	0.00	16.55	0.00	893.70
176. Clean window blind - roll up	1.00 EA	0.00	26.98	0.00	26.98
Totals: Room 110				0.00	4,384.67



Valcon Contracting Corp.

185 Summerfield Street
 Scarsdale, NY 10583
 Tel: 718-652-0190



Room 109

Height: 10'

951.34 SF Walls	910.90 SF Ceiling
1,862.24 SF Walls & Ceiling	856.90 SF Floor
95.21 SY Flooring	87.75 LF Floor Perimeter
121.67 LF Ceil. Perimeter	

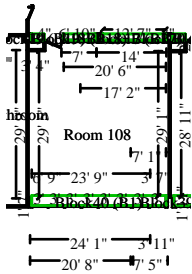
Window	3' X 7'	Opens into Exterior
Window	3' X 7'	Opens into Exterior
Window	3' X 7'	Opens into Exterior
Window	3' X 7'	Opens into Exterior
Window	3' X 7'	Opens into Exterior
Window	3' X 7'	Opens into Exterior
Window	3' X 7'	Opens into Exterior
Door	3' X 6' 8"	Opens into HALLWAY

DESCRIPTION	QTY	REMOVE	REPLACE	TAX	TOTAL
177. Clean chair	78.00 EA	0.00	13.85	0.00	1,080.30
178. Clean stool	2.00 EA	0.00	13.88	0.00	27.76
179. Clean furniture - small	18.00 EA	0.00	28.05	0.00	504.90
180. Clean furniture	22.00 EA	0.00	38.83	0.00	854.26
181. Clean desk	2.00 EA	0.00	26.25	0.00	52.50
182. Clean desk contents	8.00 LF	0.00	9.56	0.00	76.48
183. Clean office chair	2.00 EA	0.00	45.13	0.00	90.26
184. Clean bookcase (per sf of face area)	43.00 SF	0.00	1.66	0.00	71.38
185. Clean bookcase contents	14.00 LF	0.00	9.68	0.00	135.52
186. Cleaning Technician - incl. cleaning agent - per hour	16.00 HR	0.00	47.11	0.00	753.76
2 workers 4 hours each to clean miscellaneous contents in this room twice					
187. Clean wastebasket/garbage/trash can	2.00 EA	0.00	6.24	0.00	12.48
188. Clean electric fan - portable	4.00 EA	0.00	34.98	0.00	139.92
189. Clean file cabinet - two drawer - metal	4.00 EA	0.00	15.97	0.00	63.88
190. Clean cabinet - metal	2.00 EA	0.00	31.77	0.00	63.54
191. Clean cabinet contents	54.00 LF	0.00	16.55	0.00	893.70
Totals: Room 109				0.00	4,820.64



Valcon Contracting Corp.

185 Summerfield Street
 Scarsdale, NY 10583
 Tel: 718-652-0190



Room 108

Height: 10'

955.36 SF Walls	916.44 SF Ceiling
1,871.81 SF Walls & Ceiling	862.61 SF Floor
95.85 SY Flooring	88.48 LF Floor Perimeter
122.00 LF Ceil. Perimeter	

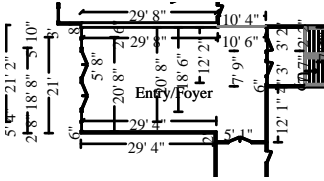
Door	3' 1" X 6' 8"	Opens into HALLWAY
Window	3' X 7'	Opens into Exterior
Window	3' X 7'	Opens into Exterior
Window	3' X 7'	Opens into Exterior
Window	3' X 7'	Opens into Exterior
Window	3' X 7'	Opens into Exterior
Window	3' X 7'	Opens into Exterior
Window	3' X 7'	Opens into Exterior
Window	3' X 7'	Opens into Exterior

DESCRIPTION	QTY	REMOVE	REPLACE	TAX	TOTAL
192. Clean chair	38.00 EA	0.00	13.85	0.00	526.30
193. Clean projector screen	96.00 SF	0.00	0.73	0.00	70.08
194. Clean furniture - large	2.00 EA	0.00	60.39	0.00	120.78
195. Clean furniture - small	18.00 EA	0.00	28.05	0.00	504.90
196. Clean furniture	20.00 EA	0.00	38.83	0.00	776.60
197. Clean desk	4.00 EA	0.00	26.25	0.00	105.00
198. Clean desk contents	8.50 LF	0.00	9.56	0.00	81.26
199. Clean office chair	4.00 EA	0.00	45.13	0.00	180.52
200. Clean bookcase (per sf of face area)	20.00 SF	0.00	1.66	0.00	33.20
201. Clean bookcase contents	8.00 LF	0.00	9.68	0.00	77.44
202. Cleaning Technician - incl. cleaning agent - per hour	8.00 HR	0.00	47.11	0.00	376.88
2 workers 2 hours each to clean miscellaneous contents in this room twice					
203. Clean cabinet contents	53.83 LF	0.00	16.55	0.00	890.89
Totals: Room 108				0.00	3,743.85



Valcon Contracting Corp.

185 Summerfield Street
 Scarsdale, NY 10583
 Tel: 718-652-0190



Entry/Foyer

Height: 10'

982.18 SF Walls	942.75 SF Ceiling
1,924.93 SF Walls & Ceiling	942.75 SF Floor
104.75 SY Flooring	97.72 LF Floor Perimeter
120.14 LF Ceil. Perimeter	

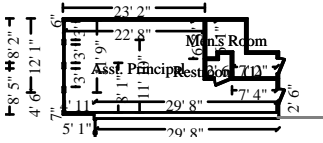
Window	1' 6" X 4'	Opens into STAIRS1
Door	3' X 6' 8"	Opens into STAIRS1
Window	1' 6" X 4'	Opens into STAIRS1
Door	3' X 6' 8"	Opens into STAIRS1
Window	1' 6" X 4'	Opens into STAIRS1
Missing Wall	10' 6 5/16" X 10'	Opens into Exterior
Window	2' X 6'	Opens into Exterior
Window	2' X 6'	Opens into Exterior
Door	5' 8" X 7'	Opens into Exterior
Door	5' 8" X 7'	Opens into Exterior
Window	2' X 6'	Opens into Exterior
Window	2' X 6'	Opens into Exterior
Door	5' 1" X 6' 8"	Opens into ROOM13

DESCRIPTION	QTY	REMOVE	REPLACE	TAX	TOTAL
204. Clean desk	2.00 EA	0.00	26.25	0.00	52.50
205. Clean desk contents	2.00 LF	0.00	9.56	0.00	19.12
206. Clean furniture - large	2.00 EA	0.00	60.39	0.00	120.78
207. Clean office chair	4.00 EA	0.00	45.13	0.00	180.52
208. Clean chair	4.00 EA	0.00	13.85	0.00	55.40
209. Clean cart	2.00 EA	0.00	20.17	0.00	40.34
210. Clean stereo - components - speakers - exterior wipe down	2.00 EA	0.00	12.13	0.00	24.26
Totals: Entry/Foyer				0.00	492.92



Valcon Contracting Corp.

185 Summerfield Street
Scarsdale, NY 10583
Tel: 718-652-0190

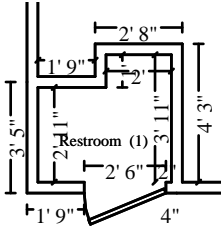


Asst. Principal

Height: 14' 2"

1,286.78 SF Walls	403.64 SF Ceiling
1,690.42 SF Walls & Ceiling	403.64 SF Floor
44.85 SY Flooring	94.11 LF Floor Perimeter
99.11 LF Ceil. Perimeter	

Window	3' X 7'	Opens into Exterior
Window	3' X 7'	Opens into Exterior
Window	3' X 7'	Opens into Exterior
Window	3' X 7'	Opens into Exterior
Door	2' 6" X 6' 8"	Opens into Exterior



Subroom: Restroom (1)

Height: 14' 2"

209.47 SF Walls	13.83 SF Ceiling
223.30 SF Walls & Ceiling	13.83 SF Floor
1.54 SY Flooring	13.46 LF Floor Perimeter
15.96 LF Ceil. Perimeter	

Door	2' 6" X 6' 8"	Opens into ASST_PRINCI
-------------	----------------------	-------------------------------

DESCRIPTION	QTY	REMOVE	REPLACE	TAX	TOTAL
211. Clean chair	16.00 EA	0.00	13.85	0.00	221.60
212. Clean furniture - small	4.00 EA	0.00	28.05	0.00	112.20
213. Clean furniture - large	4.00 EA	0.00	60.39	0.00	241.56
214. Clean file cabinet - four drawer - metal	2.00 EA	0.00	31.77	0.00	63.54
215. Clean desk	2.00 EA	0.00	26.25	0.00	52.50
216. Clean desk contents	8.00 LF	0.00	9.56	0.00	76.48
217. Clean wastebasket/garbage/trash can	2.00 EA	0.00	6.24	0.00	12.48
218. Clean refrigerator - exterior	1.00 EA	0.00	21.63	0.00	21.63
219. Cleaning Technician - incl. cleaning agent - per hour to clean miscellaneous contents	4.00 HR	0.00	47.11	0.00	188.44
220. Clean cabinet - metal	2.00 EA	0.00	31.77	0.00	63.54
221. Clean window blind - roll up	4.00 EA	0.00	26.98	0.00	107.92
Totals: Asst. Principal				0.00	1,161.89



Valcon Contracting Corp.

185 Summerfield Street
 Scarsdale, NY 10583
 Tel: 718-652-0190

Total: Main Level

0.00

35,527.19

Level 2

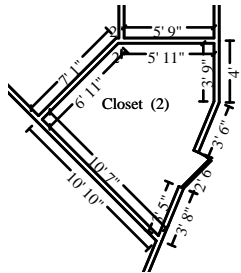
Hallway

Height: 10'



2,105.55 SF Walls	1,623.95 SF Ceiling
3,729.50 SF Walls & Ceiling	1,407.94 SF Floor
156.44 SY Flooring	252.49 LF Floor Perimeter
288.74 LF Ceil. Perimeter	

Door	3' X 6' 8"	Opens into Exterior
Door	3' X 6' 8"	Opens into ROOM_214
Door	3' X 6' 8"	Opens into Exterior
Door	3' X 6' 8"	Opens into Exterior
Window	1' 6" X 4'	Opens into STAIRS5
Door	3' 6" X 6' 8"	Opens into STAIRS5
Window	1' 6" X 4'	Opens into STAIRS5
Door	3' 6" X 6' 8"	Opens into STAIRS5
Window	1' 6" X 4'	Opens into STAIRS5
Door	3' X 6' 8"	Opens into Exterior
Door	3' X 6' 8"	Opens into Exterior
Door	3' X 6' 8"	Opens into Exterior
Door	3' X 6' 8"	Opens into Exterior



Subroom: Closet (2)

Height: 10'

349.94 SF Walls	81.04 SF Ceiling
430.98 SF Walls & Ceiling	81.04 SF Floor
9.00 SY Flooring	34.16 LF Floor Perimeter
36.66 LF Ceil. Perimeter	

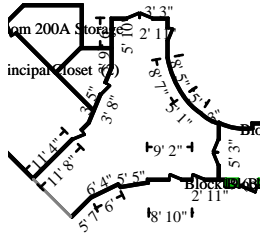
Door	2' 6" X 6' 8"	Opens into ROOM13
------	---------------	-------------------



Valcon Contracting Corp.

185 Summerfield Street
 Scarsdale, NY 10583
 Tel: 718-652-0190

CONTINUED - Hallway



Subroom: Room13 (1)

Height: 10'

1,045.07 SF Walls	740.13 SF Ceiling
1,785.19 SF Walls & Ceiling	740.13 SF Floor
82.24 SY Flooring	96.84 LF Floor Perimeter
119.84 LF Ceil. Perimeter	

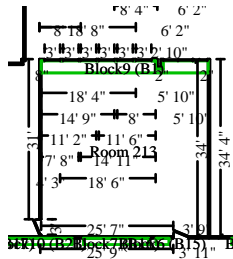
Door	5' 3" X 6' 8"	Opens into HALLWAY
Door	2' 6" X 6' 8"	Opens into Exterior
Door	2' 6" X 6' 8"	Opens into Exterior
Missing Wall	10' 9 5/16" X 10'	Opens into Exterior
Door	2' 6" X 6' 8"	Opens into ASST_PRINCI
Door	2' 6" X 6' 8"	Opens into CLOSET
Door	5' 3" X 6' 8"	Opens into Exterior
Door	2' 6" X 6' 8"	Opens into Exterior

DESCRIPTION	QTY	REMOVE	REPLACE	TAX	TOTAL
222. Clean furniture - large	2.00 EA	0.00	60.39	0.00	120.78
223. Clean chair	4.00 EA	0.00	13.85	0.00	55.40
224. Clean office chair	2.00 EA	0.00	45.13	0.00	90.26
Totals: Hallway				0.00	266.44



Valcon Contracting Corp.

185 Summerfield Street
 Scarsdale, NY 10583
 Tel: 718-652-0190



Room 213

Height: 10'

1,043.78 SF Walls	1,097.33 SF Ceiling
2,141.12 SF Walls & Ceiling	1,024.23 SF Floor
113.80 SY Flooring	91.31 LF Floor Perimeter
135.67 LF Ceil. Perimeter	

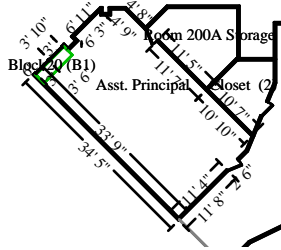
Window	3' X 7'	Opens into Exterior
Window	3' X 7'	Opens into Exterior
Window	3' X 7'	Opens into Exterior
Window	3' X 7'	Opens into Exterior
Window	3' X 7'	Opens into Exterior
Window	3' X 7'	Opens into Exterior
Window	2' 10" X 7'	Opens into Exterior
Window	2' 10" X 7'	Opens into Exterior
Door	3' X 6' 8"	Opens into HALLWAY
Door	3' X 6' 8"	Opens into Exterior

DESCRIPTION	QTY	REMOVE	REPLACE	TAX	TOTAL
225. Clean chair	58.00 EA	0.00	13.85	0.00	803.30
226. Clean furniture	6.00 EA	0.00	38.83	0.00	232.98
227. Clean desk	60.00 EA	0.00	26.25	0.00	1,575.00
228. Clean desk contents	8.00 LF	0.00	9.56	0.00	76.48
229. Clean furniture - large	8.00 EA	0.00	60.39	0.00	483.12
230. Clean office chair	2.00 EA	0.00	45.13	0.00	90.26
231. Clean bookcase (per sf of face area)	36.00 SF	0.00	1.66	0.00	59.76
232. Clean bookcase contents	6.00 LF	0.00	9.68	0.00	58.08
233. Cleaning Technician - incl. cleaning agent - per hour	8.00 HR	0.00	47.11	0.00	376.88
2 workers 4 hours each to clean miscellaneous contents in this room twice					
234. Clean wastebasket/garbage/trash can	2.00 EA	0.00	6.24	0.00	12.48
235. Clean file cabinet - four drawer - metal	2.00 EA	0.00	31.77	0.00	63.54
236. Clean cabinet contents	64.67 LF	0.00	16.55	0.00	1,070.29
237. Clean window blind - roll up	9.00 EA	0.00	26.98	0.00	242.82
Totals: Room 213				0.00	5,144.99



Valcon Contracting Corp.

185 Summerfield Street
 Scarsdale, NY 10583
 Tel: 718-652-0190



Asst. Principal

Height: 10'

949.06 SF Walls	606.32 SF Ceiling
1,555.38 SF Walls & Ceiling	593.15 SF Floor
65.91 SY Flooring	90.70 LF Floor Perimeter
105.33 LF Ceil. Perimeter	

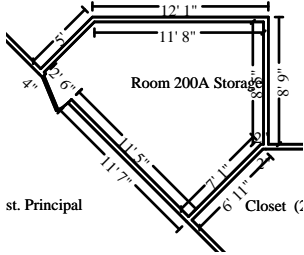
Door	2' 6" X 6' 8"	Opens into ROOM_200A_ST
Window	3' X 7'	Opens into Exterior
Window	3' X 7'	Opens into Exterior
Door	2' 6" X 6' 8"	Opens into ROOM13

DESCRIPTION	QTY	REMOVE	REPLACE	TAX	TOTAL
238. Clean chair	10.00 EA	0.00	13.85	0.00	138.50
239. Clean furniture	2.00 EA	0.00	38.83	0.00	77.66
240. Clean furniture - large	6.00 EA	0.00	60.39	0.00	362.34
241. Clean file cabinet - four drawer - metal	2.00 EA	0.00	31.77	0.00	63.54
242. Clean desk	2.00 EA	0.00	26.25	0.00	52.50
243. Clean desk contents	8.00 LF	0.00	9.56	0.00	76.48
244. Clean office chair	4.00 EA	0.00	45.13	0.00	180.52
245. Clean wastebasket/garbage/trash can	2.00 EA	0.00	6.24	0.00	12.48
246. Clean refrigerator - exterior	1.00 EA	0.00	21.63	0.00	21.63
247. Cleaning Technician - incl. cleaning agent - per hour to clean miscellaneous contents	4.00 HR	0.00	47.11	0.00	188.44
248. Clean file cabinet - two drawer - metal	2.00 EA	0.00	15.97	0.00	31.94
249. Clean window blind - roll up	4.00 EA	0.00	26.98	0.00	107.92
250. Clean bookcase (per sf of face area)	36.00 SF	0.00	1.66	0.00	59.76
251. Clean bookcase contents	12.00 LF	0.00	9.68	0.00	116.16
252. Clean table - occasional	4.00 EA	0.00	15.22	0.00	60.88
253. Clean sofa	4.00 EA	0.00	47.65	0.00	190.60
Totals: Asst. Principal				0.00	1,741.35



Valcon Contracting Corp.

185 Summerfield Street
 Scarsdale, NY 10583
 Tel: 718-652-0190



Room 200A Storage

Height: 10'

445.89 SF Walls	133.80 SF Ceiling
579.69 SF Walls & Ceiling	133.80 SF Floor
14.87 SY Flooring	43.76 LF Floor Perimeter
46.26 LF Ceil. Perimeter	

DESCRIPTION	QTY	REMOVE	Opens into ASST_PRINCI		
			REPLACE	TAX	TOTAL
254. Clean file cabinet - four drawer - metal	6.00 EA	0.00	31.77	0.00	190.62
255. Clean furniture - large	2.00 EA	0.00	60.39	0.00	120.78
256. Clean bookcase (per sf of face area)	92.00 SF	0.00	1.66	0.00	152.72
257. Clean bookcase contents	12.00 LF	0.00	9.68	0.00	116.16
Totals: Room 200A Storage				0.00	580.28
Total: Level 2				0.00	7,733.06
Line Item Totals: CROSS_HILL-CONTENTS				0.00	184,139.33

Grand Total Areas:

53,828.76 SF Walls	28,441.16 SF Ceiling	82,269.91 SF Walls and Ceiling
28,327.25 SF Floor	3,147.47 SY Flooring	4,530.06 LF Floor Perimeter
0.00 SF Long Wall	0.00 SF Short Wall	5,172.69 LF Ceil. Perimeter
28,327.25 Floor Area	29,865.29 Total Area	44,230.15 Interior Wall Area
20,643.68 Exterior Wall Area	1,978.57 Exterior Perimeter of Walls	
0.00 Surface Area	0.00 Number of Squares	0.00 Total Perimeter Length
0.00 Total Ridge Length	0.00 Total Hip Length	

Coverage	Item Total	%	ACV Total	%
Dwelling	0.00	0.00%	0.00	0.00%
Other Structures	0.00	0.00%	0.00	0.00%
Contents	184,139.33	100.00%	184,139.33	100.00%
Total	184,139.33	100.00%	184,139.33	100.00%



Valcon Contracting Corp.

185 Summerfield Street
Scarsdale, NY 10583
Tel: 718-652-0190

Summary for Contents

Line Item Total	184,139.33
Replacement Cost Value	\$184,139.33
Net Claim	\$184,139.33

Damian Reyes



Valcon Contracting Corp.

185 Summerfield Street
Scarsdale, NY 10583
Tel: 718-652-0190

Recap of Taxes



Valcon Contracting Corp.

185 Summerfield Street
Scarsdale, NY 10583
Tel: 718-652-0190

Recap by Room

Estimate: CROSS_HILL-CONTENTS		6,109.90	3.32%
Coverage: Contents	100.00% =	6,109.90	
Area: Basement		34,753.00	18.87%
Coverage: Contents	100.00% =	34,753.00	
Classroom 1		1,341.46	0.73%
Coverage: Contents	100.00% =	1,341.46	
Classroom 2 & 2A		3,502.59	1.90%
Coverage: Contents	100.00% =	3,502.59	
Classroom 2B		2,198.63	1.19%
Coverage: Contents	100.00% =	2,198.63	
Classroom 3A		6,787.69	3.69%
Coverage: Contents	100.00% =	6,787.69	
Office 3B		125.56	0.07%
Coverage: Contents	100.00% =	125.56	
Office 3C		187.88	0.10%
Coverage: Contents	100.00% =	187.88	
Classroom 4		36,978.06	20.08%
Coverage: Contents	100.00% =	36,978.06	
Storage 4A		879.60	0.48%
Coverage: Contents	100.00% =	879.60	
Office 4C		20.48	0.01%
Coverage: Contents	100.00% =	20.48	
Classroom 5		26,556.92	14.42%
Coverage: Contents	100.00% =	26,556.92	
Classroom 7		21,291.06	11.56%
Coverage: Contents	100.00% =	21,291.06	
Storage 7B		146.25	0.08%
Coverage: Contents	100.00% =	146.25	
<hr/>			
Area Subtotal: Basement		134,769.18	73.19%
Coverage: Contents	100.00% =	134,769.18	
Area: Main Level			
Room 114		4,298.61	2.33%
Coverage: Contents	100.00% =	4,298.61	
Room 114A		1,886.42	1.02%
Coverage: Contents	100.00% =	1,886.42	
Room 113		3,877.66	2.11%
Coverage: Contents	100.00% =	3,877.66	
Storage Area/Room		1,905.11	1.03%
Coverage: Contents	100.00% =	1,905.11	
Kitchen		696.92	0.38%
CROSS_HILL-CONTENTS		11/29/2021	Page: 32



Valcon Contracting Corp.

185 Summerfield Street
 Scarsdale, NY 10583
 Tel: 718-652-0190

Coverage: Contents	100.00% =	696.92	
Room 112		4,422.77	2.40%
Coverage: Contents	100.00% =	4,422.77	
Room 111		3,835.73	2.08%
Coverage: Contents	100.00% =	3,835.73	
Room 110		4,384.67	2.38%
Coverage: Contents	100.00% =	4,384.67	
Room 109		4,820.64	2.62%
Coverage: Contents	100.00% =	4,820.64	
Room 108		3,743.85	2.03%
Coverage: Contents	100.00% =	3,743.85	
Entry/Foyer		492.92	0.27%
Coverage: Contents	100.00% =	492.92	
Asst. Principal		1,161.89	0.63%
Coverage: Contents	100.00% =	1,161.89	
Area Subtotal: Main Level		35,527.19	19.29%
Coverage: Contents	100.00% =	35,527.19	
Area: Level 2			
Hallway		266.44	0.14%
Coverage: Contents	100.00% =	266.44	
Room 213		5,144.99	2.79%
Coverage: Contents	100.00% =	5,144.99	
Asst. Principal		1,741.35	0.95%
Coverage: Contents	100.00% =	1,741.35	
Room 200A Storage		580.28	0.32%
Coverage: Contents	100.00% =	580.28	
Area Subtotal: Level 2		7,733.06	4.20%
Coverage: Contents	100.00% =	7,733.06	
Subtotal of Areas		184,139.33	100.00%
Coverage: Contents	100.00% =	184,139.33	
Total		184,139.33	100.00%



Valcon Contracting Corp.

185 Summerfield Street
Scarsdale, NY 10583
Tel: 718-652-0190

Recap by Category

Items			Total	%
CONT: CLEAN APPLIANCES			792.06	0.43%
Coverage: Contents	@	100.00% =	792.06	
CONT: CLEAN ELECTRIC ITEMS			34,777.26	18.89%
Coverage: Contents	@	100.00% =	34,777.26	
CONT: CLEAN - GENERAL ITEMS			92,700.55	50.34%
Coverage: Contents	@	100.00% =	92,700.55	
CONT: CLEAN - HARD FURNITURE			33,818.65	18.37%
Coverage: Contents	@	100.00% =	33,818.65	
CLEANING			1,112.25	0.60%
Coverage: Contents	@	100.00% =	1,112.25	
CONT: PACKING,HANDLNG,STORAGE			18,879.40	10.25%
Coverage: Contents	@	100.00% =	18,879.40	
CONT: CLEAN, UPHOLSTERY & SOFT			1,444.16	0.78%
Coverage: Contents	@	100.00% =	1,444.16	
WATER EXTRACTION & REMEDIATION			615.00	0.33%
Coverage: Contents	@	100.00% =	615.00	
Subtotal			184,139.33	100.00%

